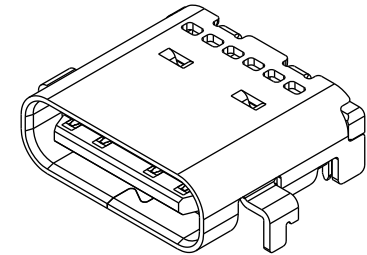
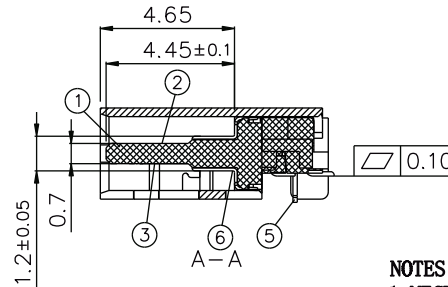
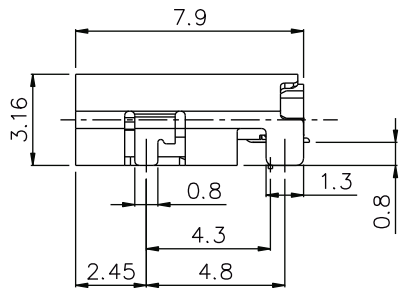
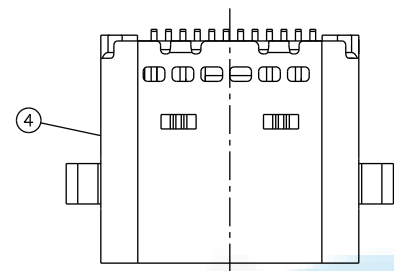


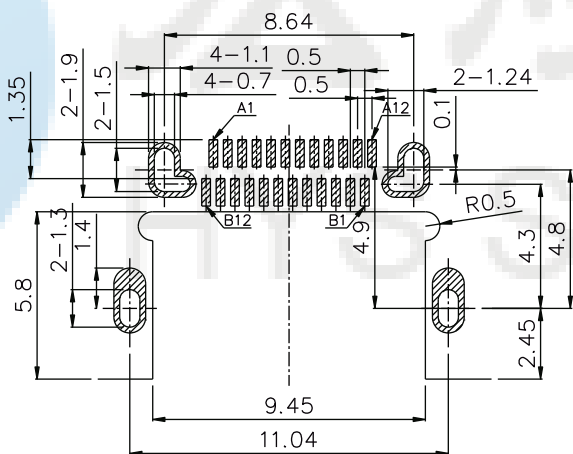
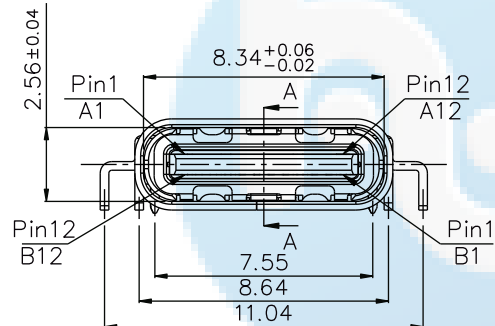
**ROHS**  
Compatible



**NOTES:**

1. MECHANICAL PERFORMANCE,
  - 1-1. INSERTION FORCE: 5N~20N.
  - 1-2. REMOVAL FORCE: 5N~20N.
  - 1-3. DURABILITY: 10000 CYCLES.
2. ELECTRICAL PERFORMANCE,
  - 2-1. CURRENT RATING: 5.0A
  - 2-2. LLCR:VBUS & GND PINS AND OTHER PINS: 40mΩ/PIN MAX. SHIELD: 50mΩ/MAX.
  - 2-3. INSULATION RESISTANCE: 100MΩ MIN FOR 1 MINUTE.
  - 2-4. DIELECTRIC WITHSTAND VOLTAGE,AC 100V FOR 1 MINUTE.
3. ENVIRONMENTAL PERFORMANCE:
 

OPERATING TEMPERATURE: -25° C~+85° C.

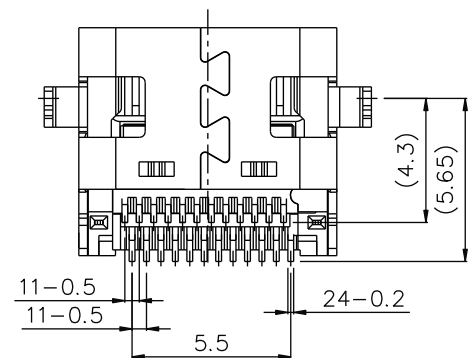


RECOMMENDED P.C.B. LAYOUT  
TOLERANCE UNSPECIFIED ±0.05mm

U5 116- 24P x 0.8C 7.9L XX  
 ↓ ↓ ↓ ↓ ↓ ↓ ↓  
 名称 流水号 PIN位 N;母座 C;沉板 L;长度 端子电镀规格  
 01=镀金1u"  
 03=镀金3u"  
 05=镀金5u"  
 30=镀金30u"

PIN ASSIGNMENTS:

PIN No.	A1	A2	A3	A4	A5	A6	A7	A8	A9	A10	A11	A12
SIGNAL NAME	GND	TX1+TX1-	Vbus	CC1	D+	D-	SBU1	Vbus	RX2-	RX2+	GND	
PIN No.	B12	B11	B10	B9	B8	B7	B6	B5	B4	B3	B2	B1
SIGNAL NAME	GND	RX1+RX1-	Vbus	SUB2	D-	D+	CC2	Vbus	TX2-	TX2+	GND	



⑥	EMI PLATE	1 PCS	STAINLESS STEEL T=0.10	
⑥	MID PLATE	1 PCS	STAINLESS STEEL T=0.15	Soldering Plating: Sn
④	SHELL	1 PCS	STAINLESS STEEL T=0.3	Ni
③	TERMINAL 2(12Pin)	1SET	COPPER ALLOY T=0.15	Under Plating: Ni Contact Plating: Au
②	TERMINAL 1(12Pin)	1SET	COPPER ALLOY T=0.15	Soldering Plating: Au
①	HOUSING	1 PCS	HIGH TEMP.THERMOPLASTIC UL94V-0	See item No
NO.	PART NAME	QTY.	MATERIAL	REMARK

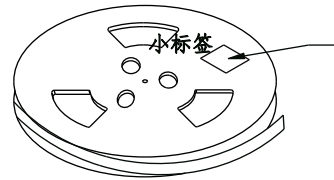
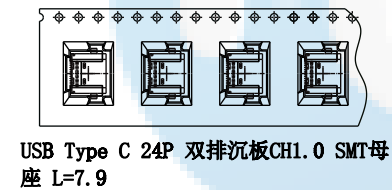
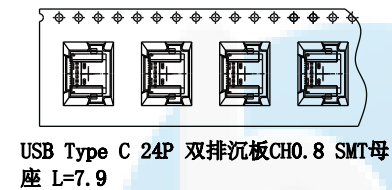
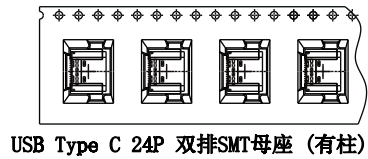
DESIGN	Li Jinwei	SC ALL	
DRAWING	Wu Qifa	UNIT	mm
CHECK	Zheng Jinxian	SIZE	A4: 210 * 297
APPROVAL	Liu Xiaohong	DATE	2020-06-10

TOLERANCE	
X.X ±0.30	X.°±2°
.XX ±0.20	.X° ±1°
.XXX ±0.10	.XX° ±0.5°

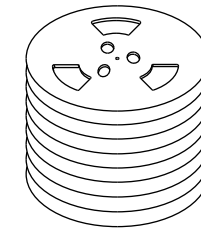
DRAWG NO.	U5116-24PN0.8C7.9LXX
TITLE:	24P沉板0.8 四脚插板双排SMT 7.9L

 **东莞市宏煜盛实业有限公司**  
 Dongguan hongyusheng Industry Co., Ltd  
 TEL: 0769-81230179 <https://www.hystypec.com>

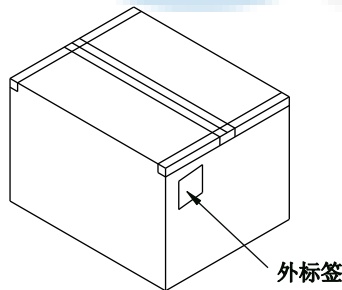
**ROHS**  
Compatible



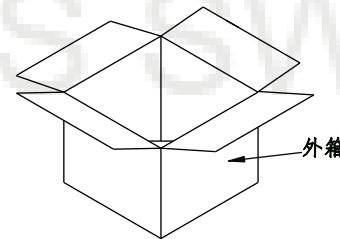
② 卷盘贴标签示意图



③ 10盘产品叠层示意图



⑤ 外箱封箱示意图



④ 产品入外箱示意图

NOTE:

1. QUANTITY/REEL: 900 PCS  
数量/卷: 900 PCS  
QUANTITY/INNER CARTON: 900 X 10 = 9000 PCS  
数量/箱: 900 X 10 = 9000 PCS
2. FREE 28 CAVE IN THE FRONT CARRIER ADN FREE  
28 CAVE IN THE END CARRIER.  
包装带内圈空28格, 外圈空28格.

DESIGN	Li Jinwei	SC ALL	
DRAWING	Wu Qifa	UNIT	mm
CHECK	Zheng Jinxian	SIZE	A4: 210 * 297
APPROVAL	Liu Xiaohong	DATE	2020-06-10

TOLERANCE	
X.X ±0.30	X.°±2°
.XX ±0.20	.X°±1°
.XXX ±0.10	.XX°±0.5°

DRAWG NO.	U5116-24PN0.8C7.9LXX
TITLE:	24P沉板0.8 四脚插板双排SMT 7.9L



**东莞市宏煜盛实业有限公司**  
Dongguan hongyusheng Industry Co., Ltd  
TEL: 0769-81230179 <https://www.hystypec.com>