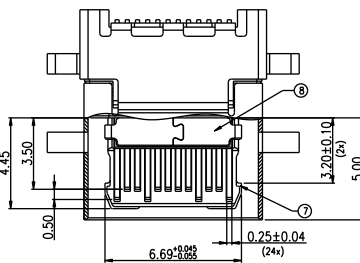
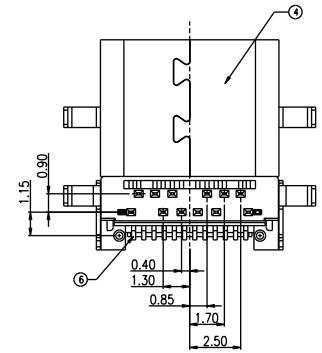
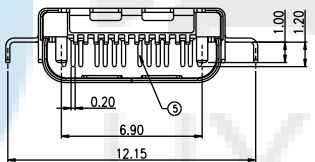
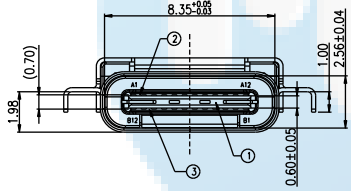
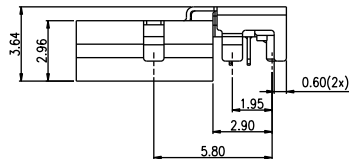
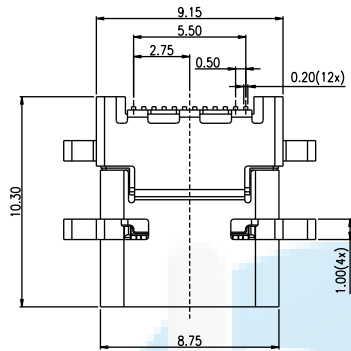


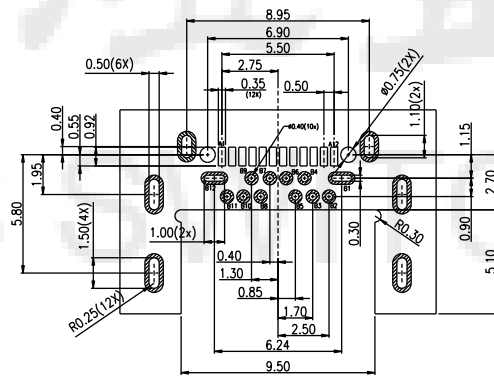
ROHS
Compatible



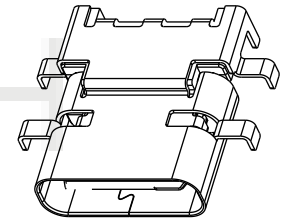
1.Electrical Performance:
Current Rating:5A on Vbus/ 1.25A on Vconn/0.25A on others
Insulation Resistance:100MΩ MIN;
Dielectric Voltage:100 VAC/minute;
Contact Resistance:40mΩ Max for initial;

2.Mechanical Performance:
Insertion Force:5~20N
Extraction Force:8~20N
Durability:10,000 Times

U5 137- 24P x 1.98C 10.3L
↓ ↓ ↓ ↓ ↓ ↓
名称 流水号 PIN位 N;母座 C;沉板 L;长度



PCB LAYOUT (RECOMMENDED)
(Tol:±0.05)



ITEM	PARTS NAME	Q'TY	MATERIAL	FINISH/REMARK
1	Insermold housing	1	LCP	Black
2	12pin Insermold-(1)	1	LCP	Black
3	12pin Insermold-(2)	1	LCP	Black
4	SHELL	1	SUS	Ni:50u" Min
5	12pin Contact-(DIP)	12	7025 COPPER ALLOY	Gold flash on contact area 100u" Tin on solder leads, base Nickel:50u"
6	12pin Contact-(SMT)	12	7025 COPPER ALLOY	Gold flash on contact area 100u" Tin on solder leads, base Nickel:50u"
7	Latch	1	SUS	base Nickel:50u" Min ;Tinc80u" Min Over All
8	Ground plate	1	SUS	Ni:50u" Min

PIN	Signal Name	PIN	Signal Name
A1	GND	B12	GND
A2	SSTXp1	B11	SSRXp1
A3	SSTXn1	B10	SSRXn1
A4	VBUS	B9	VBUS
A5	CC1	B8	SBU2
A6	Dp1	B7	Dn2
A7	Dn1	B6	Dp2
A8	SBU1	B5	CC2
A9	VBUS	B4	VBUS
A10	SSRXn2	B3	SSTXn2
A11	SSRXp2	B2	SSTXp2
A12	GND	B1	GND

DESIGN	Li Jinwei	SCALL	
DRAWING	Wu Qifa	UNIT	mm
CHECK	Zheng Jinxian	SIZE	A4: 210 * 297
APPROVAL	Liu Xiaohong	DATE	2020-06-10

DRAWG NO.	U5137-24PN1.98C10.3L
TITLE:	24P沉板1.98mm 六脚插板DIP+SMT 10.3L



东莞市宏煜盛实业有限公司
Dongguan hongyusheng Industry Co., Ltd
TEL: 0769-81230179 <https://www.hystypec.com>