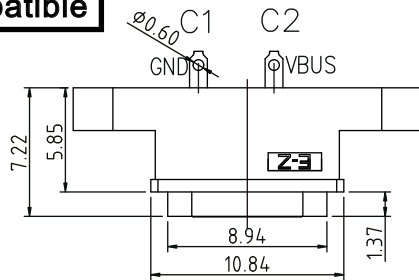


ROHS
Compatible

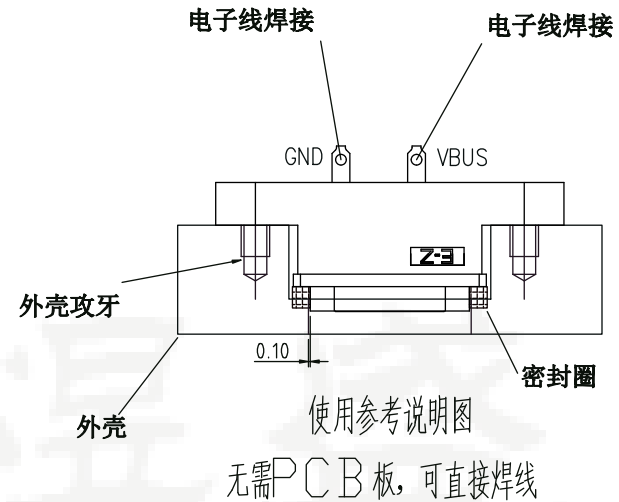
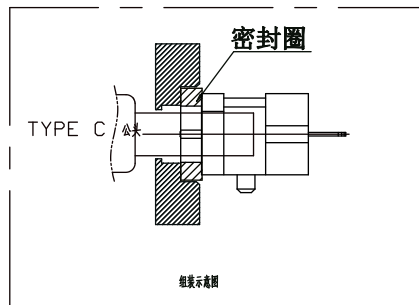
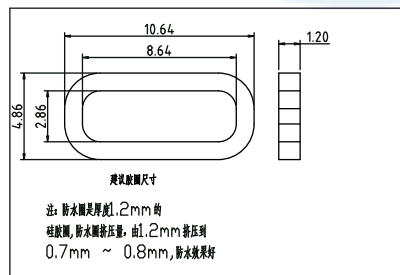
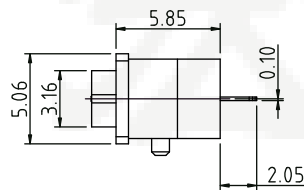
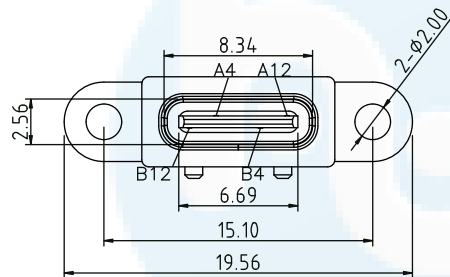


INTERFACE(FRONT VIEW)

| | | | | | | | | | | | |
|-----|-----|-----|------|----|----|----|----|------|-----|-----|-----|
| A1 | A2 | A3 | A4 | A5 | A6 | A7 | A8 | A9 | A10 | A11 | A12 |
| | | | VBUS | | | | | | | | GND |
| GND | | | | | | | | VBUS | | | |
| B12 | B11 | B10 | B9 | B8 | B7 | B6 | B5 | B4 | B3 | B2 | B1 |

PIN ASSIGNMENT

| | | |
|-------------|---------|-------|
| PIN NO. | A12&B12 | A4&B4 |
| SINGAL NAME | GND | VBUS |
| PCB PAD NO. | C1 | C2 |



NOTES:

SPECIFICATION:

1. CURRENT RATING: 3.0A MAX
2. DIELECTRIC WITHSTAND VOLTAGE: 100VAC
3. TEMPERATURE RANGE: -30 °C ~ 85 °C
4. CONTACT RESISTANCE: 40 MILLIONHM MAX
5. INSULATION RESISTANCE: 100 MEGOHMS MIN.
6. INSERTION FORCE : 5N~20N
7. UNMATING FORCE: 8N~20N
8. DURABILITY:5000 CYCLES

| | | | | |
|------|----------|------|-----------------------------------------------------|----------------------------------------------------------------------------|
| 5 | Shell2 | 1 | SUS304 Ni Plating T=0.20mm | Ni40~120u ² |
| 4 | Shell1 | 1 | SUS304 Ni Plating T=0.3mm | Ni40~120u ² |
| 3 | Housing2 | 1 | LCP(G.F30%) | |
| 2 | Contact | 4 | Phosphor bronze_C5210R-EH Au/Ni Plating T=0.20mm | Ni40~160u ² AuCONTACT AREA:3u ² OTHER AREA:G/F |
| 1 | Housing | 1 | PA9T (G.F30%) | |
| ITEM | PARTNAME | Q'TY | FINISH | NOTE |

| | | | |
|----------|---------------|--------|---------------|
| DESIGN | Li Jinwei | SC ALL | |
| DRAWING | Wu Qifa | UNIT | mm |
| CHECK | Zheng Jinxian | SIZE | A4: 210 * 297 |
| APPROVAL | Liu Xiaohong | DATE | 2020-06-10 |

| | |
|------------|-----------|
| TOLERANCE | |
| X.X ±0.30 | X.°±2° |
| .XX ±0.20 | .X°±1° |
| .XXX ±0.10 | .XX°±0.5° |

| | |
|-----------|----------------------|
| DRAWG NO. | TYPE-C-LD02PZ722 |
| TITLE: | 2P外接焊线式防水 7.22L IPX8 |

东莞市宏煜盛实业有限公司
Dongguan hongyusheng Industry Co., Ltd
TEL: 0769-81230179 <https://www.hystypec.com>