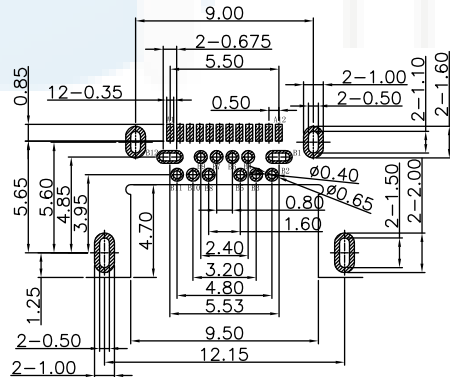
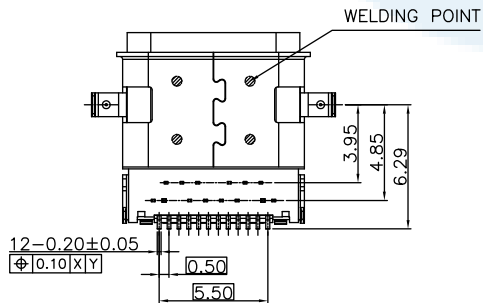
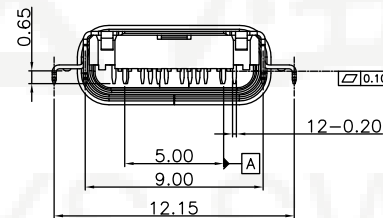
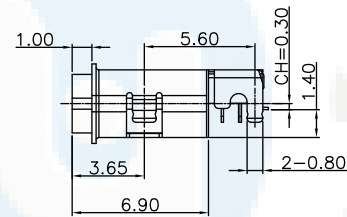
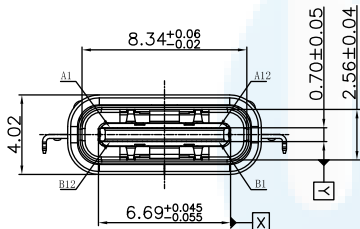
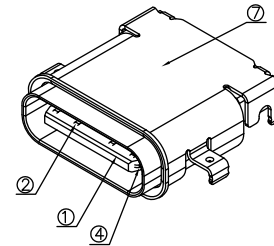
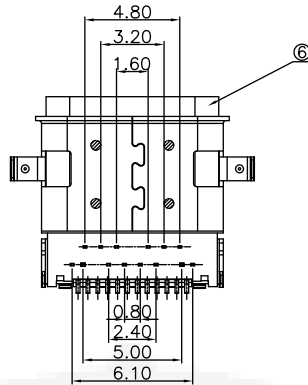
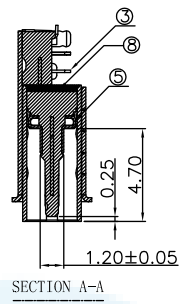
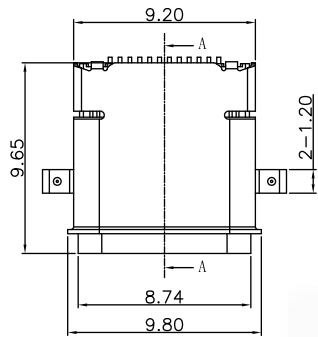


**ROHS**  
Compatible



RECOMMENDED P.C.B LAYOUT(Both sides are sample)  
Tolerance: +0.05 Thickness: 0.60mm

Pin	Signal Name	Mating Sequence	Pin	Signal Name	Mating Sequence
A1	GND	First	B12	GND	First
A2	SSTXp1	Second	B11	SSRXp1	Second
A3	SSTXn1	Second	B10	SSRXn1	Second
A4	V <sub>BUS</sub>	First	B9	V <sub>BUS</sub>	First
A5	CC1	Second	B8	SBU2	Second
A6	Dp1	Second	B7	Dn2	Second
A7	Dn1	Second	B6	Dp2	Second
A8	SBU1	Second	B5	CC2	Second
A9	V <sub>BUS</sub>	First	B4	V <sub>BUS</sub>	First
A10	SSRXn2	Second	B3	SSTXn2	Second
A11	SSRXp2	Second	B2	SSTXp2	Second
A12	GND	First	B1	GND	First
SHELL	GND		SHELL	GND	

NOTES:

- MATERIAL: SEE "TABLE 1";
- FINISH: SEE "TABLE 1";
- ELECTRICAL :
  - CONTACT CURRENT RATING :  
5A(VBUS PIN 1.5A/PIN),  
5A(GND PIN 1.25A/PIN MAX),0.25A/PIN(OTHER PIN).
  - INSULATION RESISTANCE :  
100 MEGAOHMS MIN. AT 250VDC.
  - DIELECTRIC WITHSTANDING VOLTAGE :  
100VAC MIN.
  - LOW LEVEL CONTACT RESISTANCE :  
INITIAL 40mΩ MAX.  
AFTER 50mΩ MAX.
- MECHANICAL CHARACTERISTICS :
  - MATING FORCE: 5~20N;
  - UNMATING FORCE: 8~20N(INITIAL),6~20N(AFTER 10000 CYCLES);
  - DURABILITY : 10,000 MATING CYCLES.
  - OPERATING TEMPERATURE :-40°C TO +80°C



TABLE 1:

NO.	PART NAME	QTY	MATERIAL	DESCRIPTION	REMARK
⑥	GLUE WATER	1	Epoxy	BLACK;	
⑦	Shell-2	1	Stainless steel	PEARL NI PLATING;	T=0.20mm
⑧	Shell-1	1	Stainless steel	PEARL NI PLATING;	T=0.20mm
⑤	GND PLATE	1	Stainless steel	NI PLATING;	T=0.10mm
④	MID PLATE	1	Stainless steel		T=0.15mm
③	Terminal-B	12		CONTACT AREA:AU15u"	T=0.12mm
②	Terminal-A	12	C7025	CONTACT AREA:AU15u"	T=0.12mm
①	Housing	1	HIGH TEMP NYLON	Black	

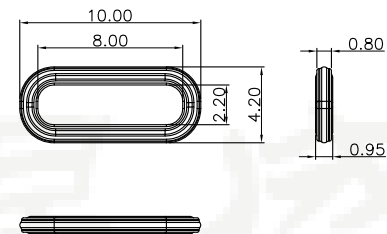
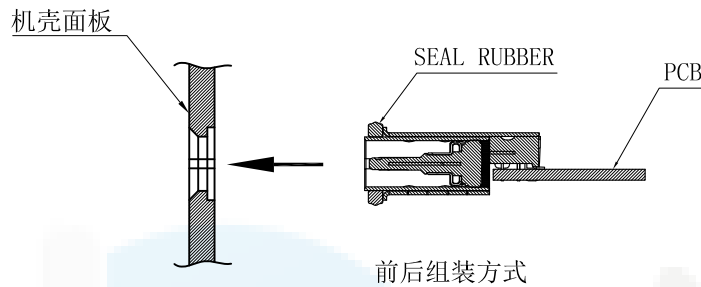
DESIGN	Li Jinwei	SCALL		 TOLERANCE X.X ±0.30 X.°±2° .XX ±0.20 .X°±1° .XXX ±0.10 .XX°±0.5°
DRAWING	Wu Qifa	UNIT	mm	
CHECK	Zheng Jinxian	SIZE	A4: 210 * 297	
APPROVAL	Liu Xiaohong	DATE	2020-06-10	

DRAWG NO.	TYPE-C-CDS24PF140
TITLE:	防水24P沉板1.4四脚插板DIP+SMT IPX7 9.65L

**东莞市宏煜盛实业有限公司**  
 Dongguan hongyusheng Industry Co., Ltd  
 TEL: 0769-81230179 <https://www.hystypec.com>

**ROHS**  
Compatible

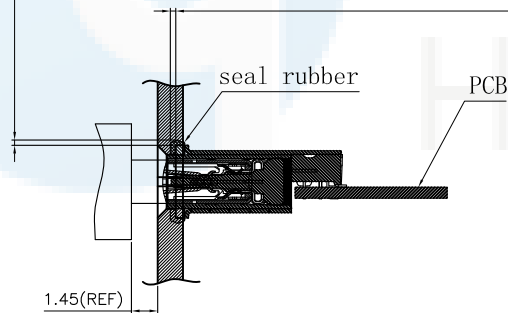
### 密封方式



Seal Rubber For Reference

Space(Panel with Seal Rubber)0.30Min  
(The amount of compression is recommended as 40%~50% of seal rubber O.D.)

Space(Panel with Seal Rubber)0.30Min  
(The amount of compression is recommend as 40%~50% of seal rubber O.D.)



Recommended Assembly

DESIGN	Li Jinwei	SCALL			DRAWG NO.	TYPE-C-CDS24PF140
DRAWING	Wu Qifa	UNIT	mm		TOLERANCE	
CHECK	Zheng Jinxian	SIZE	A4: 210 * 297	X.X ±0.30 X.°±2°	防水24P沉板1.4四脚插板DIP+SMT IPX7 9.65L	
APPROVAL	Liu Xiaohong	DATE	2020-06-10	.XX ±0.20 .X° ±1°		
				.XXX ±0.10 .XX° ±0.5°		东莞市宏煜盛实业有限公司 Dongguan hongyusheng Industry Co., Ltd TEL: 0769-81230179 <a href="https://www.hystypec.com">https://www.hystypec.com</a>